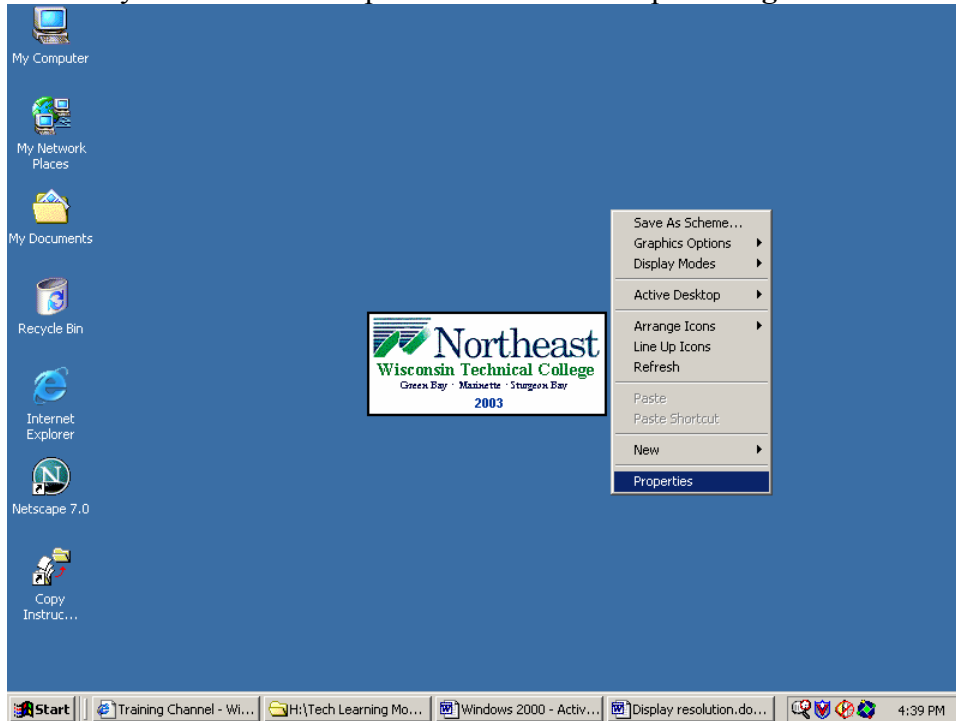


## Changing Display Resolution

At times it is easier to view your information if you enlarge the display resolution or shrink the display resolution. The default resolution of your display is 800 by 600 pixels.

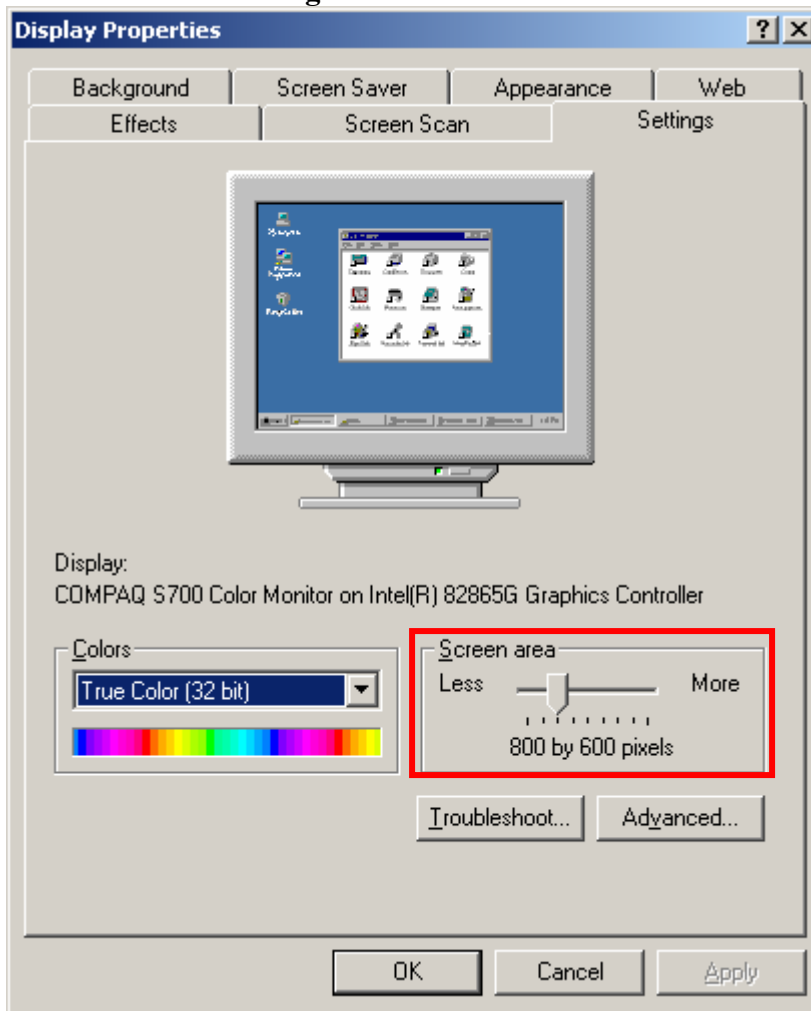
To change the display resolution

1. Position your mouse in an open area on the desktop and **Right mouse** click.



2. Left click on **Properties**.

3. Left click on the **Settings Tab**.



4. Drag the horizontal bar of the **screen area**. Change to 640 by 480 pixels if you want to **enlarge** the display or change to 1024 by 768 pixels if you want to **shrink** the display.
5. Click **Apply** then **OK** on the display properties dialog box.
6. The monitor will flicker then display the new desktop settings.  
You will then be asked if this is the setting you want. If so, click **Yes**.